

InTouch

WITH MEMBERS OF  FRANKLIN RURAL ELECTRIC COOPERATIVE

January 2023

Your Touchstone Energy® Cooperative 

A WORD FROM



Garrett Thompson
Chief Executive Officer

“PLEASE INFORM US HOW THE WIND TURBINES HAVE HELPED KEEP COSTS DOWN.”

I will say upfront that Franklin REC does not own or have any part in the wind turbines within our service territory. Corn Belt Power Cooperative, our generation and transmission company, has turbines, but they are not directly tied into the Franklin REC system.

With the current political climate, we often receive questions about renewables, specifically wind and solar. When

A question from our membership

the subject of cost savings inevitably comes up, and how much is saved, my answer is almost always “it depends.”

Yes, renewables by themselves are cheaper thanks to subsidies and efficiencies we gain with each new advancement in technology, but there is more to the story. If we relied just on wind energy, our power would be one of two things: 1) Extremely expensive due to supplementing the turbines when they weren't running with real-time purchases on the open energy market, or 2) Frustratingly intermittent due to the wind not blowing all day every day of the year.

Those two issues are a major reason why we subscribe to an “all-the-above” approach. It takes wind; solar; hydro; natural gas; and yes, even coal to help us achieve our co-op's mission of providing safe and affordable electricity that you, our member, have come to rely on for decades.

Just know we aren't for or against any one specific type of energy, but rather it takes all of them together to ac-

complish our mission to our members. However, with the constant change in technology we understand that portfolio may look completely different in 10 to 20 years. Rest assured that Franklin REC, along with our generation and transmission partner, are always on the lookout for new technology or gains in efficiencies that help keep costs down for the entire membership.

We love having an engaged membership and receiving questions like this. It would be great to devote a section of this newsletter to cover questions from you! No matter what type of energy question you have, whether it be philosophical, or specific to Franklin REC, we'd love to answer them. There are multiple ways you can ask your question(s) whether it be via mail, phone, email, text, or through social media. If you look at the bottom of the last page of this newsletter you will find the various ways to get in touch with us.

Please keep the questions coming, and we look forward to hearing from you.



The Franklin REC December Servant Leadership project was the second annual Christmas card event. Employees wrote and delivered 287 Christmas cards to residents of eight senior living facilities in the REC service territory. Making the residents' holidays a little merrier and brighter, the employees included either a candy cane or a make-your-own ornament in each card.

BOARD ROOM highlights

At their November meeting, Franklin REC directors:

- Approved work orders and special equipment capitalization totaling \$89,241.14
- Approved 2023 board meeting dates
- Approved donation for Franklin County Fair queen
- Approved estate patronage retirements



Portable generator safety

When you have lost power, a generator can provide electricity to keep your home warm and your appliances powered. Improper use, however, may present hazards.

- Read and follow all manufacturer instructions.
- Check the cords for damage.
- Ensure the device is able to handle the wattage of the appliances that you plan to use.
- Perform regular maintenance.
- Make sure that the generator is grounded and in a dry area.
- Never connect your portable generator directly to the structure, which can result in potentially deadly backfeed.
- Shut down your generator and let it cool before refueling.
- Store your fuel away from the generator in an approved container with a charged fire extinguisher nearby.
- Never operate your generator near flame-producing devices.
- Never use a portable generator indoors—opening a window or door or turning on a fan will not produce enough fresh air to reduce the danger of carbon monoxide.
- Never run the generator near windows or doors.
- Clear at least three to four feet on all sides of the generator to allow for ventilation.
- Install a battery-operated carbon monoxide detector.

Be proactive in preventing electrical fires

Take steps to help prevent electrical fires by identifying possible issues before they occur.

When assessing your home, hire a licensed electrician to check all wiring. Beyond that, watch for possible issues as they arise.

Signs of issues include flickering lights, discolored outlets and switch plates, damaged cords, frequently tripped circuit breakers or blown fuses.

Check these electrically related items in your home:

1. **Electrical outlets:** Check for loose-fitting plugs and loose wall receptacles. Replace missing or broken wall plates. If you have young children, install tamper-resistant outlets. Avoid overloading outlets with adapters and too many appliance plugs.
2. **Ground fault circuit interrupters (GFCIs):** Make sure GFCIs are installed in your kitchen, bathrooms, laundry room, workshop, basement, garage, and outdoor outlets. GFCIs help protect against electrical shock. Use the Test and Reset buttons monthly to ensure that they are working properly.
3. **Cords:** Check cords to ensure they are not frayed or cracked, placed under rugs, tightly wrapped around an object, or located in high traffic areas. Do not nail or staple them to walls, floors, or other objects.
4. **Extension cords:** Not intended to be permanent solutions, use them temporarily. If you need more electrical outlets, consult your electrician.
5. **Light bulbs:** Verify that your light bulbs are the intended wattage for your fixture.
6. **Appliances/electronics:** If an appliance repeatedly blows a fuse, trips a circuit breaker, or gives you an electrical shock, it may

be time to discard it and replace it with a new version. Or it may be a service capacity issue (see No. 10 below).

7. **Circuit breakers/fuses:** Check that circuit breakers are working properly. Fuses should be properly rated for the circuits they protect.
8. **Electrical wiring:** If an outlet is not working, it may be an indicator of unsafe wiring. Also, check for loose wires and lighting fixtures. Listen for popping or sizzling sounds behind walls. If light switches are hot to the touch or lights spark and flicker, immediately shut them off at the circuit breaker and contact a qualified electrician to make repairs.
9. **Arc fault circuit interrupters (AFCIs):** AFCIs, which monitor the flow of electricity throughout your home, should be properly installed. If an AFCI detects any abnormality, it shuts the system off to prevent a fire. Upon inspection, an electrician can assess whether your home is properly protected.
10. **Service capacity:** If fuses blow or trip frequently, you may need to increase the capacity of your electrical service or add new branch circuits. Contact a qualified electrician to take a look at your service.



New Year, New Savings.



Visit our website to learn about programs to help you save energy and money.

Rebates for appliances

Contact us at 641-456-2557 for information on our rebates for new, ENERGY STAR rated appliances installed at members' locations:

- Clothes dryer - \$50
- Clothes washer - \$50
- Dishwasher - \$25
- Freezer - \$25
- Refrigerator - \$25



The Energy Star label will be located in the bottom right corner of the Energy Guide.



Students: Deadlines approaching!

Be sure to visit our website at www.franklinrec.coop to learn more about available opportunities and deadlines:

Basin Electric Power Cooperative Scholarship

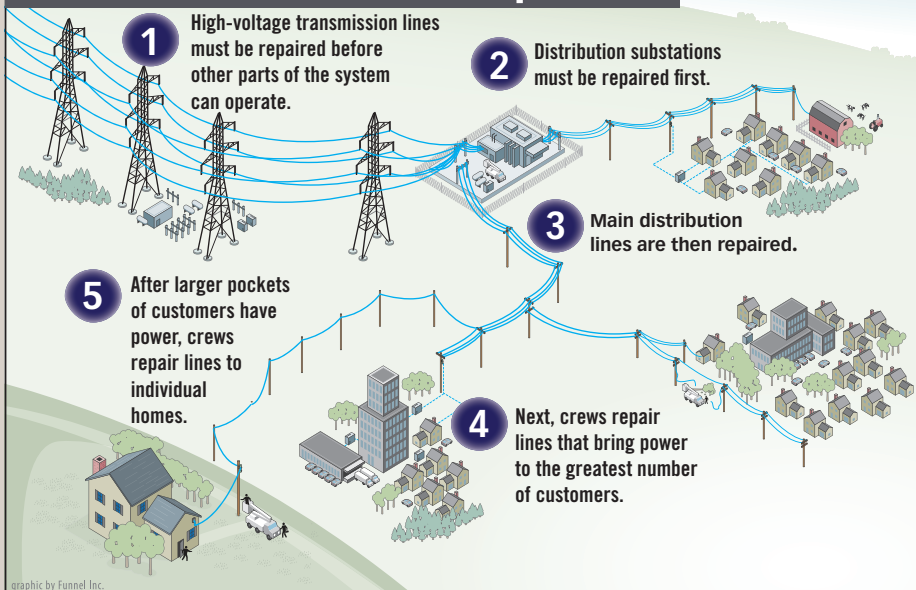
Commitment to Community Scholarship

Iowa Lakes Community College Scholarship

Northwest Iowa Community College Scholarship

Youth Tour Trip to Washington, D.C.

How line crews restore power



When a widespread outage occurs, line crews work long, hard hours to restore service safely to the greatest number of members in the shortest time possible.

Working from substations to homes results in faster repairs for the most members.

POWER OUTAGE MAP

Information about power outages affecting electric cooperative members in Iowa is available online.

To see a statewide map of power outages, visit our website: www.franklinrec.coop.

Remember to always call Franklin REC at 641-456-2557 to report an outage.

Franklin REC 2023 Annual Meeting Nominating Committee Notice

It shall be the duty of the Board of Directors to appoint, not less than thirty (30) days nor more than one hundred twenty (120) days before the date of a meeting of the members at which Directors are to be elected, committees on nominations consisting of at least three (3) persons. At least one (1) nominating committee member is to be selected from each district from which a director is to be elected. No officer or member of the Board shall be appointed a member of the committee. The committee shall prepare and post at the principal office of the Association at least thirty (30) days before the meeting a list of nominations for Directors.

Such nominations shall be made by districts as herein prescribed to succeed the Directors whose terms will expire at the meeting of members for which such nominations are made, and the members so nominated shall be bona fide residents of the district from which they are nominated. Any fifteen (15) or more members may take other nomination in writing over their signatures not less than twenty (20) days prior to the meeting and the secretary shall post the same at the place where the list of nominations made by the committee is posted.

Nominees made by Petition must satisfy the same eligibility requirements as nominees selected by the committee on nominations. The secretary shall mail with the notice of meeting a statement of the number of directors to be elected and showing separately the list of nominations made by the committee on nominations and the nominations made by petition, if any.

MARK YOUR CALENDARS: Your 2023 Franklin REC annual meeting will be held Tuesday, April 4, 2023.



Light Up the Night 2022 a success

Oh, what fun it was to spend the day with you! Franklin REC's Light Up the Night (and Day!) celebration, hosted Nov. 26, 2022, was greeted with an overwhelming response from event attendees. Over 500 people spent the afternoon and evening in downtown Hampton enjoying the activities hosted by fellow local businesses along with Franklin REC.

The full day of festivities began with businesses welcoming attendees to create ornaments, decorate sugar cookies, and receive a temporary tattoo. Each stop had over 100 participants join the fun. After the downtown activities concluded, the Windsor Theatre became a full-house with only a handful of seats remaining for the free matinee of Dr. Seuss' The Grinch. Before movie-goers entered the theatre, they were greeted by the Grinch!

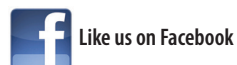
In the evening, Santa and Mrs. Claus led the parade of 27 lighted entries through downtown Hampton. After the parade, people made their way to Band Shell Park where the holiday festivities continued. Buddy the Elf shared the exciting news that Mr. and Mrs. Claus were on their way. After their arrival, the crowd helped count down to the lighting of the 30-foot Christmas tree.

Next were photos with Santa and Mrs. Claus, writing Santa letters, trolley rides, and hot cocoa and cookies. Band Shell Park remained lit throughout December for all to enjoy during the holiday season.

Franklin REC thanks everyone who continues to support Light Up the Night.



INTouch® is published monthly for members of Franklin Rural Electric Cooperative
1560 Highway 65 • PO Box 437 • Hampton, IA 50441
PHONES: 641.456.2557 • FAX: 641.456.5183
OFFICE HOURS: Mon. - Fri., 7 a.m. to 3:30 p.m.
CEO/GENERAL MANAGER: Garrett Thompson • EDITOR: Anne Gardiner, CCC



smart choices 

Sign up for our e-newsletter at franklinrec.coop

Online bill pay at
franklinrec.coop

Visit us online at www.franklinrec.coop

This institution is an equal opportunity provider and employer.